

Tariff No. 1-W (Water)

RULE NO. 23
WATER CONSERVATION – (Continued)

J. ENFORCEMENT DURING PERIODS OF DROUGHT

In addition to H above, Enforcement during Periods of Drought will be consistent with GBWC's Water Conservation Plan which contains financial penalties.

Levy violation fees for water wasting and/or unauthorized use of utility water:

First offense	\$ 25.00
Second Offense	\$ 50.00
Third Offense	\$100.00
Fourth offense and subsequent offenses	\$250.00

Each day or portion thereof during which a violation continues may constitute a separate offense. In addition, any person, customer or legal entity who has been previously warned is subject to the next penalty level.

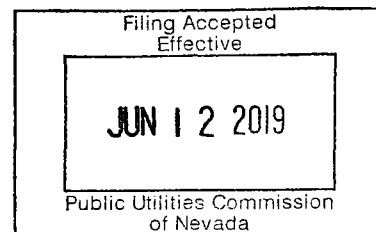
Discontinuance of water service and Turn On / Off fees may be applied.

K. NOTICE

The enforcements set forth in Sections H and I above shall not be implemented by the Utility, except in cases of emergencies, prior to the expiration of three (3) days notice in conformance with Rule No. 4 of this Tariff. Notice shall be deemed given three (3) days after mailing, first class postage pre-paid.

Issued:
Effective:
Advice No.:

Issued by:
Wendy Barnett, President
Great Basin Water Co.



Great Basin Water Co.
1240 E. State St., Ste. 115
Pahrump, NV 89048

FIRST REVISED PUCN Sheet No. 233
Cancels
ORIGINAL PUCN Sheet No. 233

Tariff No. 1-W (Water)

RULE NO. 23
WATER CONSERVATION – (Continued)

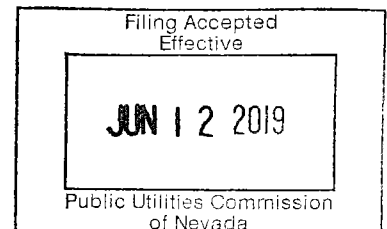
L. RESTRICTIONS ON USE OF RECREATIONAL WATER

1. Recreational Water shall be exempt from Section F of this rule. Use of Recreational Water shall occur on a schedule set by a written agreement between the Utility and any HOA or Governmental Entity. In the event that no such agreement is reached, the Restrictions on use of Recreational Water shall be governed by Sections F and H of this rule.
2. Violation of Section F shall be enforced in a manner consistent with Section I and J of this rule, except that notice to the HOA or Governmental Entity shall be complete by leaving a copy of the notice with the Association's President, any board member, or the Association's counsel or the Governmental Entity Management.

C
T
C
C
C
C
C
C

Issued:
Effective:
Advice No.:

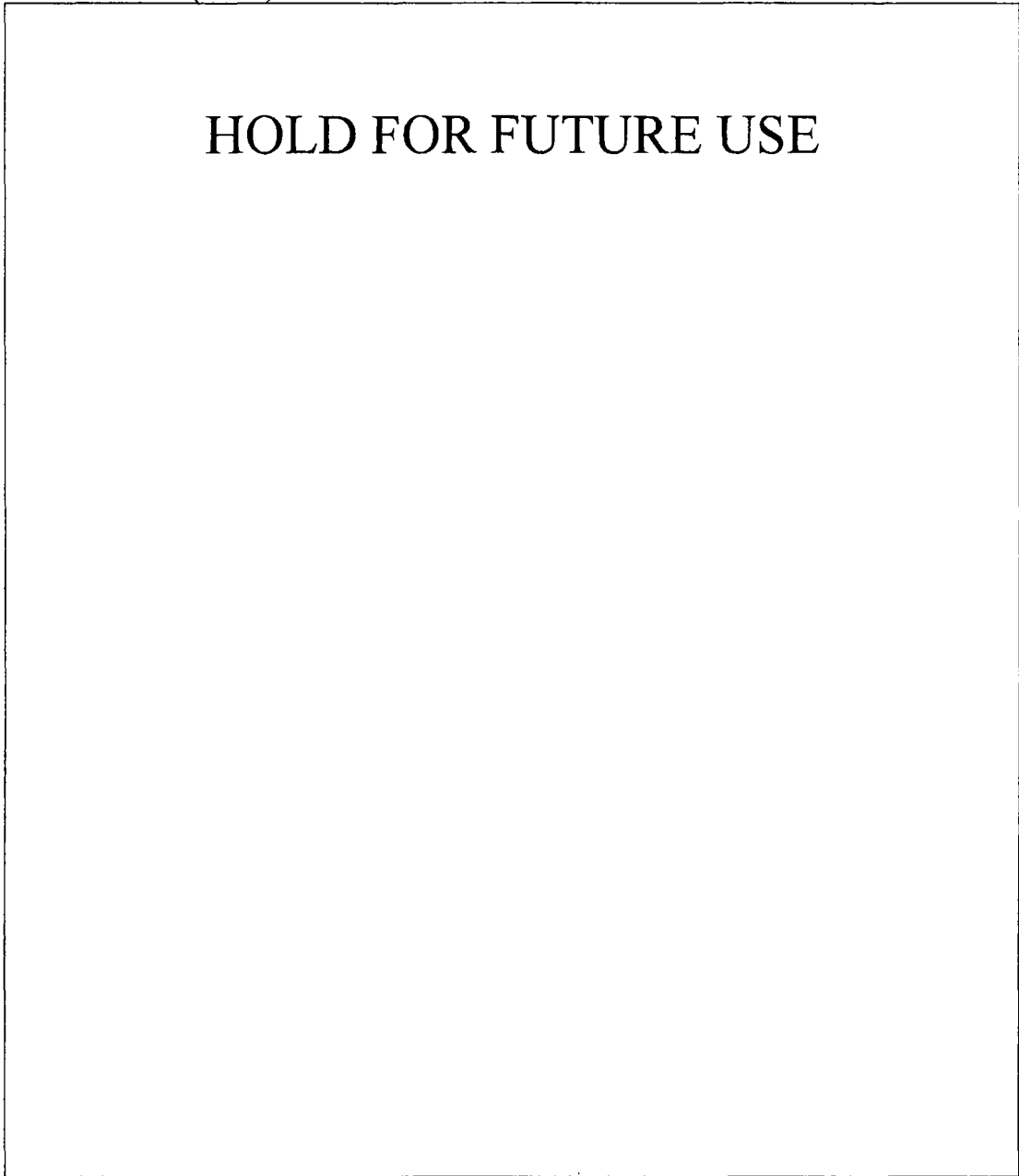
Issued by:
Wendy Barnett, President
Great Basin Water Co.



Great Basin Water Co.
1240 E. State St., Ste. 115
Pahrump, NV 89048

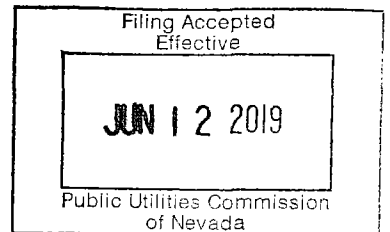
FIRST REVISED PUCN Sheet No. 234
Cancels
ORIGINAL PUCN Sheet No. 234

Tariff No. 1-W (Water)



Issued:
Effective:
Advice No.:

Issued by:
Wendy Barnett, President
Great Basin Water Co.

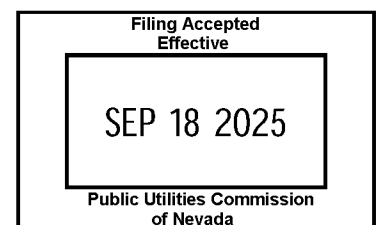


Tariff No. 1-W (Water)

<u>SCHEDULE WRES-1</u>			
<u>RESIDENTIAL SERVICE – COLD SPRINGS, SPANISH SPRINGS, SPRING CREEK, AND PAHRUMP</u>			
<u>APPLICABILITY</u>			
The charges set forth in this Schedule apply to all Customers who receive Residential service from the Utility.			
<u>RATES – RESIDENTIAL</u>			
The charge for water service shall consist of a monthly Base Rate (assessed on the size of the Customer's water meter) plus the sum of Volumetric Charges. Volumetric Charges include a Commodity Charge, Deferred Water Service Adjustment, and System Improvement Rate and are assessed based on consumption.			
<u>BASE RATE</u>			
Meter Size	Monthly Rate – Pahrump, Spring Creek, and Spanish Springs	Monthly Rate – Cold Springs	T/D
5/8"	\$ 25.00	\$ 18.00	
3/4"	\$ 25.00	\$ 18.00	
1"	\$ 31.26	\$ 31.26	
1 1/2"	\$ 37.51	\$ 37.51	
2"	\$ 71.28	\$ 71.28	
3"	\$ 121.17	\$ 121.17	
4"	\$ 145.40	\$ 145.40	
6"	\$ 290.81	\$ 290.81	
8"	\$ 448.85	\$ 448.85	
10"	\$ 660.07	\$ 660.07	
<u>COMMODITY CHARGE</u>			
Cold Springs	Metered Consumption	Rate per 1,000 gallons	R
Tier 1	0 to 5,000 gallons	\$ 2.82	
Tier 2	5,001 to 30,000 gallons	\$ 4.00	
Tier 3	30,001+ gallons	\$ 5.13	

Issued:
 Effective:
 Advice No.:

Issued by:
 James Eason, President
 Great Basin Water Co.



Tariff No. 1-W (Water)

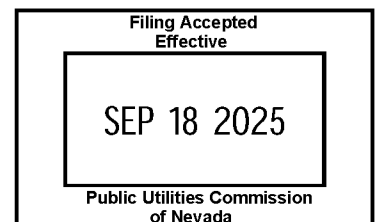
<u>SCHEDULE WRES-1</u>		
<u>RESIDENTIAL SERVICE – COLD SPRINGS, SPANISH SPRINGS, SPRING CREEK, AND PAHRUMP (continued)</u>		
<u>COMMODITY CHARGE - continued</u>		
Spanish Springs Metered Consumption		Rate per 1,000 gallons
Tier 1	0 to 5,000 gallons	\$ 2.16
Tier 2	5,001 to 30,000 gallons	\$ 3.06
Tier 3	30,001+ gallons	\$ 3.93
Spring Creek Metered Consumption		Rate per 1,000 gallons
Tier 1	0 to 5,000 gallons	\$ 4.30
Tier 2	5,001 to 30,000 gallons	\$ 6.09
Tier 3	30,001+ gallons	\$ 7.82
Pahrump Metered Consumption		Rate per 1,000 gallons
Tier 1	0 to 5,000 gallons	\$ 3.18
Tier 2	5,001 to 30,000 gallons	\$ 4.51
Tier 3	30,001+ gallons	\$ 5.79
<u>DEFERRED WATER SERVICE ADJUSTMENT¹</u>		
		Rate per 1,000 gallons
Cold Springs		\$ 0.10
Spanish Springs		\$ 0.06
Spring Creek		\$ 0.47
Pahrump		\$ 0.08
¹ Rates approved in Docket No. 24-10008.		
<u>SYSTEM IMPROVEMENT RATE</u>		
		Rate per 1,000 gallons
Cold Springs		N/A
Spanish Springs		N/A
Spring Creek		N/A
Pahrump		N/A
<u>PAHRUMP TAX ADJUSTMENT CHARGE</u>		
The charges for service hereunder shall be subject to the tax adjustment rider of Utility's water tariff, when applicable.		

R
|
T
|
T
|
R

T

Issued:
 Effective:
 Advice No.:

Issued by:
 James Eason, President
 Great Basin Water Co.

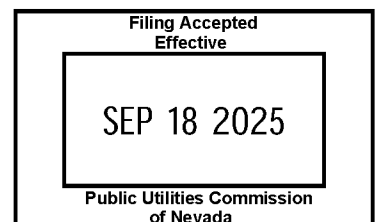


Tariff No. 1-W (Water)

<u>SCHEDULE WMF-1</u>			
<u>MULTI-FAMILY SERVICE – COLD SPRINGS, SPANISH SPRINGS, SPRING CREEK, AND PAHRUMP</u>			
<u>APPLICABILITY</u>			
<p>The charges set forth in this Schedule apply to all Customers who receive Multi-Family service from the Utility.</p>			
<u>RATES – MULTI-FAMILY</u>			
<p>The charge for water service shall consist of a monthly Base Rate (assessed on the size of the Customer's water meter) plus the sum of the Commodity Charge (assessed on the metered consumption) and applicable surcharge or sur credit calculation for the Deferred Water Service Adjustment and System Improvement Rate if applicable.</p>			
<u>BASE RATE</u>			
Meter Size	Monthly Rate – Pahrump, Spring Creek, and Spanish Springs	Monthly Rate – Cold Springs	T/D
5/8"	\$ 25.00	\$ 18.00	
3/4"	\$ 25.00	\$ 18.00	T/D
1"	\$ 31.26	\$ 31.26	
1 1/2"	\$ 37.51	\$ 37.51	I
2"	\$ 71.28	\$ 71.28	
3"	\$ 121.17	\$ 121.17	
4"	\$ 145.40	\$ 145.40	
6"	\$ 290.81	\$ 290.81	
8"	\$ 448.85	\$ 448.85	
10"	\$ 660.07	\$ 660.07	I
<u>COMMODITY CHARGE</u>			
Cold Springs	Metered Consumption	Rate per 1,000 gallons	
Tier 1	0 to 5,000 gallons	\$ 1.80	R
Tier 2	5,001 to 30,000 gallons	\$ 2.86	
Tier 3	30,001+ gallons	\$ 3.82	R

Issued:
 Effective:
 Advice No.:

Issued by:
 James Eason, President
 Great Basin Water Co.



Tariff No. 1-W (Water)

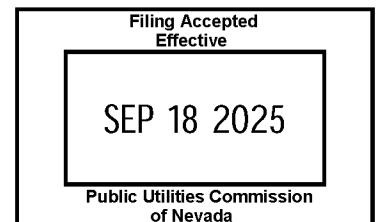
<u>SCHEDULE WMF-1</u>		
<u>MULTI-FAMILY SERVICE – COLD SPRINGS, SPANISH SPRINGS, SPRING CREEK, AND PAHRUMP (continued)</u>		
<u>COMMODITY CHARGE - continued</u>		
Spanish Springs	Metered Consumption	Rate per 1,000 gallons
Tier 1	0 to 5,000 gallons	\$ 1.38
Tier 2	5,001 to 30,000 gallons	\$ 2.19
Tier 3	30,001+ gallons	\$ 2.92
Spring Creek	Metered Consumption	Rate per 1,000 gallons
Tier 1	0 to 5,000 gallons	\$ 2.74
Tier 2	5,001 to 30,000 gallons	\$ 4.36
Tier 3	30,001+ gallons	\$ 5.82
Pahrump	Metered Consumption	Rate per 1,000 gallons
Tier 1	0 to 5,000 gallons	\$ 2.03
Tier 2	5,001 to 30,000 gallons	\$ 3.22
Tier 3	30,001+ gallons	\$ 4.31
<u>DEFERRED WATER SERVICE ADJUSTMENT¹</u>		
		Rate per 1,000 gallons
Cold Springs		\$ 0.10
Spanish Springs		\$ 0.06
Spring Creek		\$ 0.47
Pahrump		\$ 0.08
<u>SYSTEM IMPROVEMENT RATE</u>		
		Rate per 1,000 gallons
Cold Springs		N/A
Spanish Springs		N/A
Spring Creek		N/A
Pahrump		N/A
<u>PAHRUMP TAX ADJUSTMENT CHARGE</u>		
The charges for service hereunder shall be subject to the tax adjustment rider of Utility's water tariff, when applicable.		

R
 |
 T
 |
 R

¹ Rates approved in Docket No. 24-10008.

Issued:
 Effective:
 Advice No.:

Issued by:
 James Eason, President
 Great Basin Water Co.



Great Basin Water Co.
1240 E. State St., Ste. 115
Pahrump, NV 89048

THIRD REVISED PUCN Sheet No. 238A
Cancels
SECOND REVISED PUCN Sheet No. 238A

Tariff No. 1-W (Water)

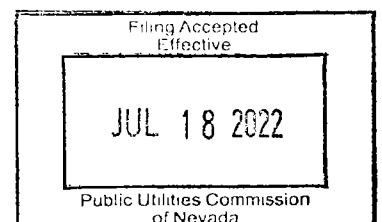
HOLD
FOR FUTURE
USE

D

D

Issued:
Effective:
Advice No.:

Issued by:
Sean Twomey, President
Great Basin Water Co.



Great Basin Water Co.
1240 E. State St., Ste. 115
Pahrump, NV 89048

FIFTH REVISED PUCN Sheet No. 238B
Cancels
FOURTH REVISED PUCN Sheet No. 238B

Tariff No. 1-W (Water)

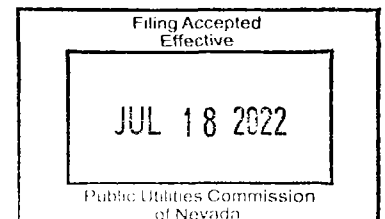
HOLD
FOR FUTURE
USE

D

D

Issued:
Effective:
Advice No.:

Issued by:
Sean Twomey, President
Great Basin Water Co.

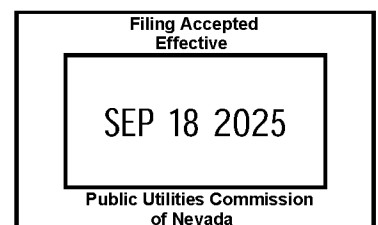


Tariff No. 1-W (Water)

<u>SCHEDULE WNRES-1</u>			
<u>NON-RESIDENTIAL SERVICE – COLD SPRINGS, SPANISH SPRINGS, SPRING CREEK, AND PAHRUMP</u>			
<u>APPLICABILITY</u>			
The charges set forth in this Schedule apply to all Customers who receive Non-Residential service from the Utility.			
<u>RATES – NON-RESIDENTIAL</u>			
The charge for water service shall consist of a monthly Base Rate (assessed on the size of the Customer's water meter) plus the sum of Volumetric Charges. Volumetric Charges include a Commodity Charge, Deferred Water Service Adjustment, and System Improvement Rate and are assessed based on consumption.			
<u>BASE RATE</u>			
Meter Size	Monthly Rate – Pahrump, Spring Creek, and Spanish Springs	Monthly Rate – Cold Springs	T/D
5/8"	\$ 25.00	\$ 18.00	
3/4"	\$ 25.00	\$ 18.00	
1"	\$ 31.26	\$ 31.26	
1 1/2"	\$ 37.51	\$ 37.51	
2"	\$ 71.28	\$ 71.28	
3"	\$ 121.17	\$ 121.17	
4"	\$ 145.40	\$ 145.40	
6"	\$ 290.81	\$ 290.81	
8"	\$ 448.85	\$ 448.85	
10"	\$ 660.07	\$ 660.07	
<u>COMMODITY CHARGE</u>			
Cold Springs ≤4"	Metered Consumption	Rate per 1,000 gallons	
Tier 1	0 to 5,000 gallons	\$ 2.13	
Tier 2	5,001 to 30,000 gallons	\$ 3.54	
Tier 3	30,001+ gallons	\$ 5.02	

Issued:
 Effective:
 Advice No.:

Issued by:
 James Eason, President
 Great Basin Water Co.



Tariff No. 1-W (Water)

<u>SCHEDULE WNRES-1</u>		
<u>NON-RESIDENTIAL SERVICE – COLD SPRINGS, SPANISH SPRINGS, SPRING CREEK, AND PAHRUMP (continued)</u>		
<u>COMMODITY CHARGE - continued</u>		
Cold Springs >4"	Metered Consumption	Rate per 1,000 gallons
Tier 1	0 to 5,000 gallons	\$ 2.13
Tier 2	5,001 to 2,000,000	\$ 3.54
Tier 3	2,000,001+ gallons	\$ 5.02
Spanish Springs ≤4"	Metered Consumption	Rate per 1,000 gallons
Tier 1	0 to 5,000 gallons	\$ 1.63
Tier 2	5,001 to 30,000 gallons	\$ 2.71
Tier 3	30,001+ gallons	\$ 3.84
Spanish Springs >4"	Metered Consumption	Rate per 1,000 gallons
Tier 1	0 to 5,000 gallons	\$ 1.63
Tier 2	5,001 to 2,000,000	\$ 2.71
Tier 3	2,000,001+ gallons	\$ 3.84
Spring Creek ≤4"	Metered Consumption	Rate per 1,000 gallons
Tier 1	0 to 5,000 gallons	\$ 3.25
Tier 2	5,001 to 30,000 gallons	\$ 5.39
Tier 3	30,001+ gallons	\$ 7.66
Spring Creek >4"	Metered Consumption	Rate per 1,000 gallons
Tier 1	0 to 5,000 gallons	\$ 3.25
Tier 2	5,001 to 2,000,000	\$ 5.39
Tier 3	2,000,001+ gallons	\$ 7.66
Pahrump ≤4"	Metered Consumption	Rate per 1,000 gallons
Tier 1	0 to 5,000 gallons	\$ 2.40
Tier 2	5,001 to 30,000 gallons	\$ 3.99
Tier 3	30,001+ gallons	\$ 5.66
Pahrump >4"	Metered Consumption	Rate per 1,000 gallons
Tier 1	0 to 5,000 gallons	\$ 2.40
Tier 2	5,001 to 2,000,000	\$ 3.99
Tier 3	2,000,001+ gallons	\$ 5.66

R

R

Issued:
 Effective:
 Advice No.:

Issued by:
 James Eason, President
 Great Basin Water Co.

Filing Accepted Effective
SEP 18 2025
Public Utilities Commission of Nevada

Tariff No. 1-W (Water)

SCHEDULE WNRES-1

NON-RESIDENTIAL – COLD SPRINGS, SPANISH SPRINGS,
SPRING CREEK, AND PAHRUMP (continued)

DEFERRED WATER SERVICE ADJUSTMENT¹

	Rate per 1,000 gallons
Cold Springs	\$ 0.10
Spanish Springs	\$ 0.06
Spring Creek	\$ 0.47
Pahrump	\$ 0.08

¹ Rates approved in Docket No. 24-10008.

SYSTEM IMPROVEMENT RATE

	Rate per 1,000 gallons
Cold Springs	N/A
Spanish Springs	N/A
Spring Creek	N/A
Pahrump	N/A

PAHRUMP TAX ADJUSTMENT CHARGE

The charges for service hereunder shall be subject to the tax adjustment rider of Utility's water tariff, when applicable.

PAHRUMP DEPOSIT FOR TEMPORARY SERVICE

Each Applicant for Temporary Service in the Pahrump Division for construction purposes or for other purposes of limited duration shall be required to deposit with the Utility a sum of money equal to the estimated bill for water service to be rendered, plus the estimated charge for installing and removing service facilities.

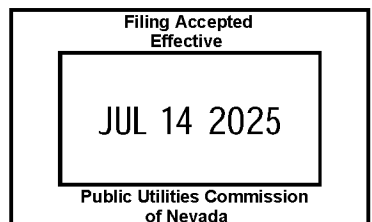
L

D/R
D/R

L

Issued:
Effective:
Advice No.:

Issued by:
James Eason, President
Great Basin Water Co.



Tariff No. 1-W (Water)

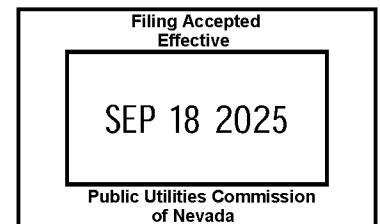
<u>SCHEDULE WIRR-1</u>		
<u>IRRIGATION SERVICE – COLD SPRINGS, SPANISH SPRINGS, SPRING CREEK, AND PAHRUMP</u>		
<u>APPLICABILITY – TO ALL IRRIGATION CUSTOMERS</u>		
<p>The charges set forth in this Schedule apply to all Customers who receive Irrigation service from the Utility.</p>		
<u>RATES – IRRIGATION</u>		
<p>The charge for water service shall consist of a monthly Base Rate (assessed on the size of the Customer's water meter) plus the sum of Volumetric Charges. Volumetric Charges include a Commodity Charge, Deferred Water Service Adjustment, and System Improvement Rate and are assessed based on consumption.</p>		
<u>BASE RATE</u>		
Meter Size	Monthly Rate – Pahrump, Spring Creek, and Spanish Springs	Monthly Rate – Cold Springs
5/8"	\$ 25.00	\$ 18.00
3/4"	\$ 25.00	\$ 18.00
1"	\$ 31.26	\$ 31.26
1 1/2"	\$ 37.51	\$ 37.51
2"	\$ 71.28	\$ 71.28
3"	\$ 121.17	\$ 121.17
4"	\$ 145.40	\$ 145.40
6"	\$ 290.81	\$ 290.81
8"	\$ 448.85	\$ 448.85
10"	\$ 660.07	\$ 660.07
<u>COMMODITY CHARGE</u>		
Cold Springs ≤4"	Metered Consumption	Rate per 1,000 gallons
Tier 1	0 to 5,000 gallons	\$ 3.48
Tier 2	5,001 to 100,000 gallons	\$ 4.77
Tier 3	100,001+ gallons	\$ 6.04

T/D
|
T/D
|
I
|
I

R
|
R

Issued:
 Effective:
 Advice No.:

Issued by:
 James Eason, President
 Great Basin Water Co.



\Tariff No. 1-W (Water)

SCHEDULE WIRR-1
IRRIGATION SERVICE – COLD SPRINGS, SPANISH SPRINGS,
SPRING CREEK, AND PAHRUMP (continued)

COMMODITY CHARGE (continued)

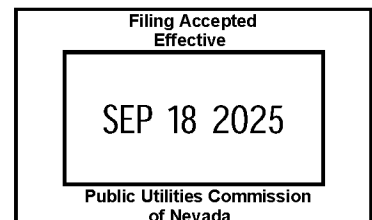
Cold Springs >4”	Metered Consumption	Rate per 1,000 gallons
Tier 1	0 to 5,000 gallons	\$ 3.48
Tier 2	5,001 to 2,000,000 gallons	\$ 4.77
Tier 3	2,000,001+ gallons	\$ 6.04
Spanish Springs ≤4”	Metered Consumption	Rate per 1,000 gallons
Tier 1	0 to 5,000 gallons	\$ 2.66
Tier 2	5,001 to 100,000 gallons	\$ 3.65
Tier 3	100,001+ gallons	\$ 4.62
Spanish Springs >4”	Metered Consumption	Rate per 1,000 gallons
Tier 1	0 to 5,000 gallons	\$ 2.66
Tier 2	5,001 to 2,000,000 gallons	\$ 3.65
Tier 3	2,000,001+ gallons	\$ 4.62
Spring Creek ≤4”	Metered Consumption	Rate per 1,000 gallons
Tier 1	0 to 5,000 gallons	\$ 5.31
Tier 2	5,001 to 100,000 gallons	\$ 7.26
Tier 3	100,001+ gallons	\$ 9.20
Spring Creek >4”	Metered Consumption	Rate per 1,000 gallons
Tier 1	0 to 5,000 gallons	\$ 5.31
Tier 2	5,001 to 2,000,000 gallons	\$ 7.26
Tier 3	2,000,001+ gallons	\$ 9.20
Pahrump ≤4”	Metered Consumption	Rate per 1,000 gallons
Tier 1	0 to 5,000 gallons	\$ 3.93
Tier 2	5,001 to 100,000 gallons	\$ 5.37
Tier 3	100,001+ gallons	\$ 6.81
Pahrump >4”	Metered Consumption	Rate per 1,000 gallons
Tier 1	0 to 5,000 gallons	\$ 3.93
Tier 2	5,001 to 2,000,000 gallons	\$ 5.37
Tier 3	2,000,001+ gallons	\$ 6.81

R

R

Issued:
 Effective:
 Advice No.:

Issued by:
 James Eason, President
 Great Basin Water Co.



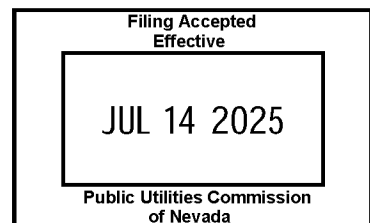
Tariff No. 1-W (Water)

<u>SCHEDULE WIRR-1</u>		
<u>IRRIGATION SERVICE – COLD SPRINGS, SPANISH SPRINGS, SPRING CREEK, AND PAHRUMP (continued)</u>		
<u>DEFERRED WATER SERVICE ADJUSTMENT¹</u>		
	Rate per 1,000 gallons	
Cold Springs	\$ 0.10	
Spanish Springs	\$ 0.06	
Spring Creek	\$ 0.47	
Pahrump	\$ 0.08	
¹ Rates approved in Docket No. 24-10008.		
<u>SYSTEM IMPROVEMENT RATE</u>		
	Rate per 1,000 gallons	
Cold Springs	N/A	
Spanish Springs	N/A	
Spring Creek	N/A	D/R
Pahrump	N/A	D/R
<u>PAHRUMP TAX ADJUSTMENT CHARGE</u>		
The charges for service hereunder shall be subject to the tax adjustment rider of Utility's water tariff, when applicable.		

L
 —————
 D/R
 D/R
 —————
 L

Issued:
 Effective:
 Advice No.:

Issued by:
 James Eason, President
 Great Basin Water Co.



Tariff No. 1-W (Water)

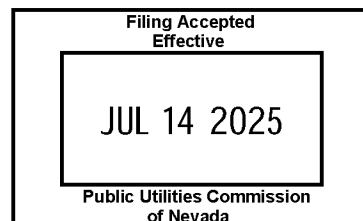
<u>SCHEDULE WITS(MF)-1</u>		
<u>WATER IRRIGATION TRANSMISSION SERVICE – PAHRUMP</u>		
<u>APPLICABILITY – TO ALL WATER IRRIGATION TRANSMISSION CUSTOMERS</u>		
<p>The charges set forth in this Schedule apply to all Customers who receive Water Irrigation Transmission service from the Utility.</p>		
<u>RATES – IRRIGATION TRANSMISSION SERVICE</u>		
<p>The charge for water service shall consist of a monthly Base Rate (assessed on the size of the Customer’s water meter) plus the sum of Volumetric Charges. Volumetric Charges include a Commodity Charge and System Improvement Rate and are assessed based on consumption.</p>		
<u>BASE RATE</u>		
Meter Size	Monthly Rate	
5/8”	\$	26.38
3/4”	\$	39.58
1”	\$	65.96
1 1/2”	\$	131.92
2”	\$	211.08
3”	\$	422.16
4”	\$	659.62
6”	\$	1319.22
8”	\$	1319.22
10”	\$	1319.22
<u>COMMODITY CHARGE</u>		
	Metered Consumption	Rate per 1,000 gallons
	All consumption	\$ 1.02
<u>SYSTEM IMPROVEMENT RATE</u>		
		Rate per 1,000 gallons
		N/A

I
|
I

I

Issued:
 Effective:
 Advice No.:

Issued by:
 James Eason, President
 Great Basin Water Co.



Great Basin Water Co.
1240 E. State St., Ste. 115
Pahrump, NV 89048

SIXTH REVISED PUCN Sheet No. 244
Cancels
FIFTH REVISED PUCN Sheet No. 244

Tariff No. 1-W (Water)

HOLD
FOR FUTURE
USE

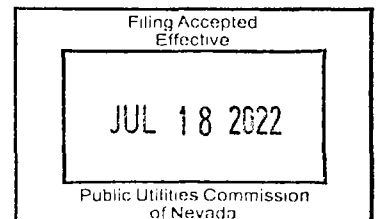
D

D

L
L
L

Issued:
Effective:
Advice No.:

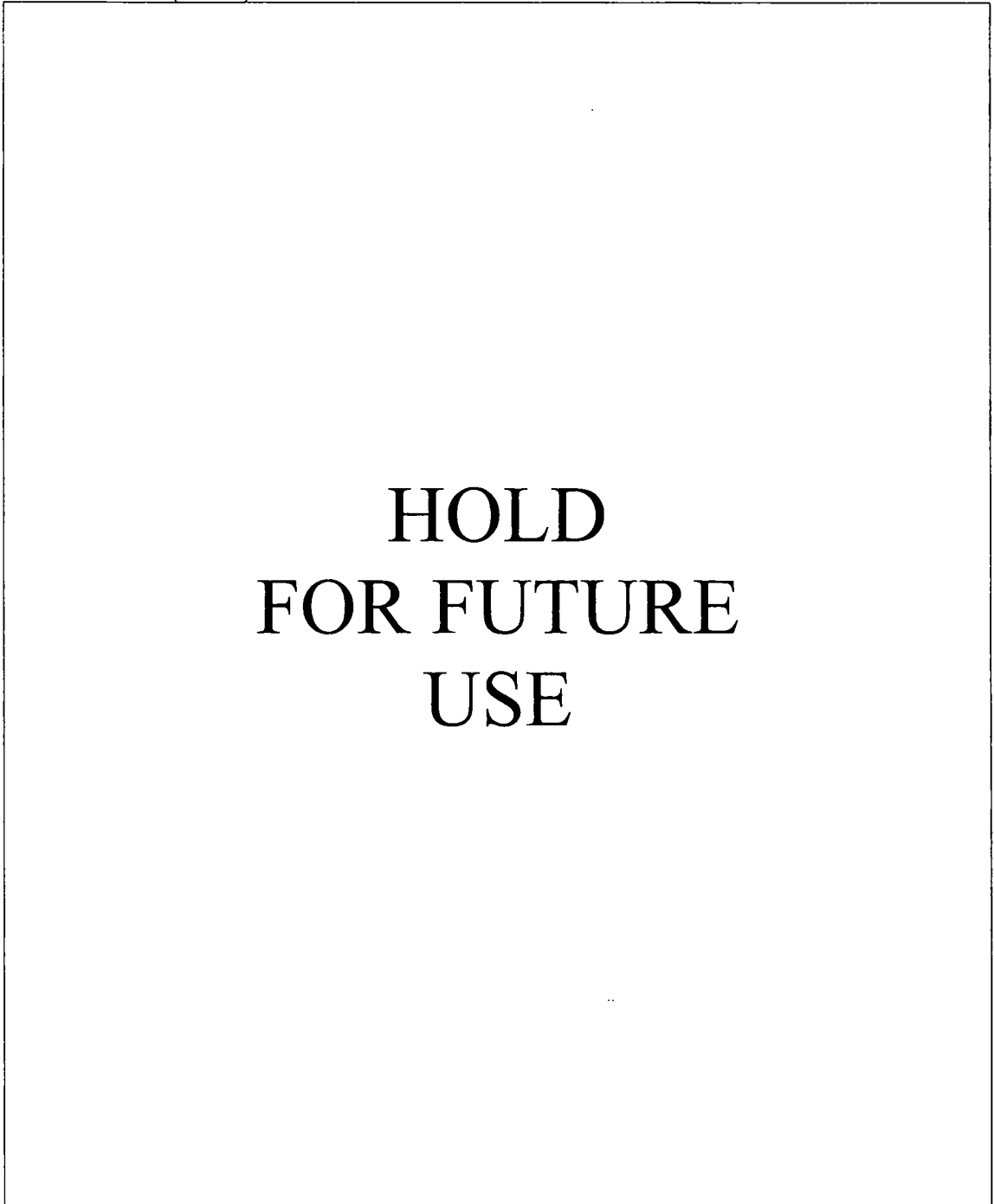
Issued by:
Sean Twomey, President
Great Basin Water Co.



Great Basin Water Co.
1240 E. State St., Ste. 115
Pahrump, NV 89048

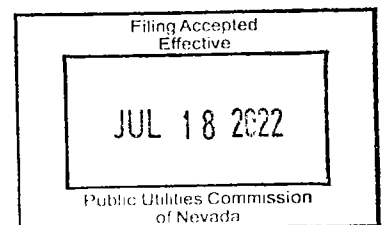
FIRST REVISED PUCN Sheet No. 245
Cancels
ORIGINAL PUCN Sheet No. 245

Tariff No. 1-W (Water)



Issued:
Effective:
Advice No.:

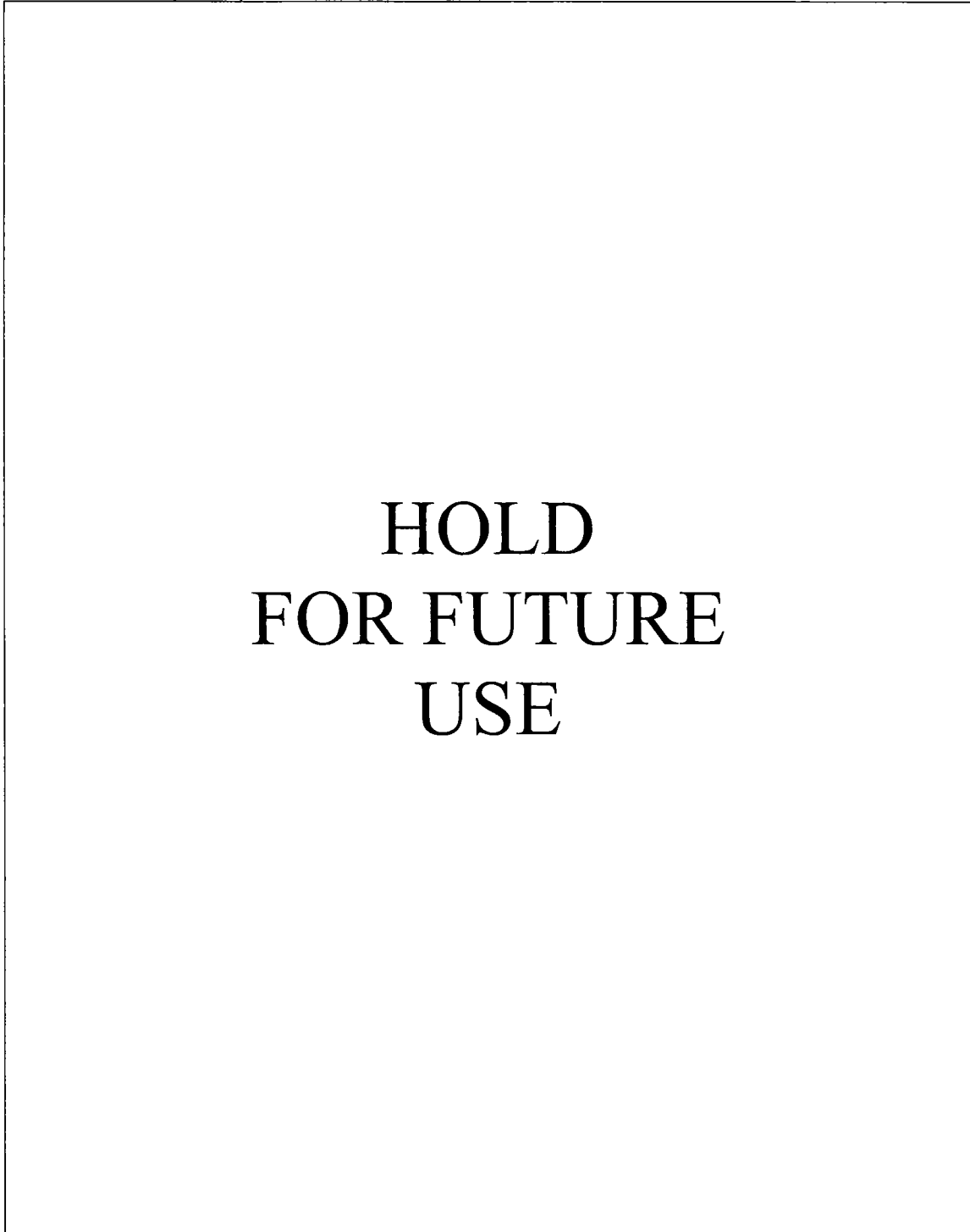
Issued by:
Sean Twomey, President
Great Basin Water Co.



Great Basin Water Co.
1240 E. State St., Ste. 115
Pahrump, NV 89048

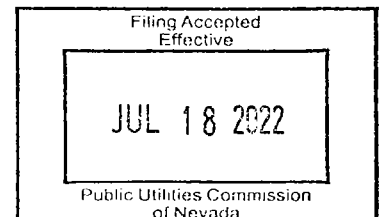
FIRST REVISED PUCN Sheet No. 246
Cancels
ORIGINAL PUCN Sheet No. 246

Tariff No. 1-W (Water)



Issued:
Effective:
Advice No.:

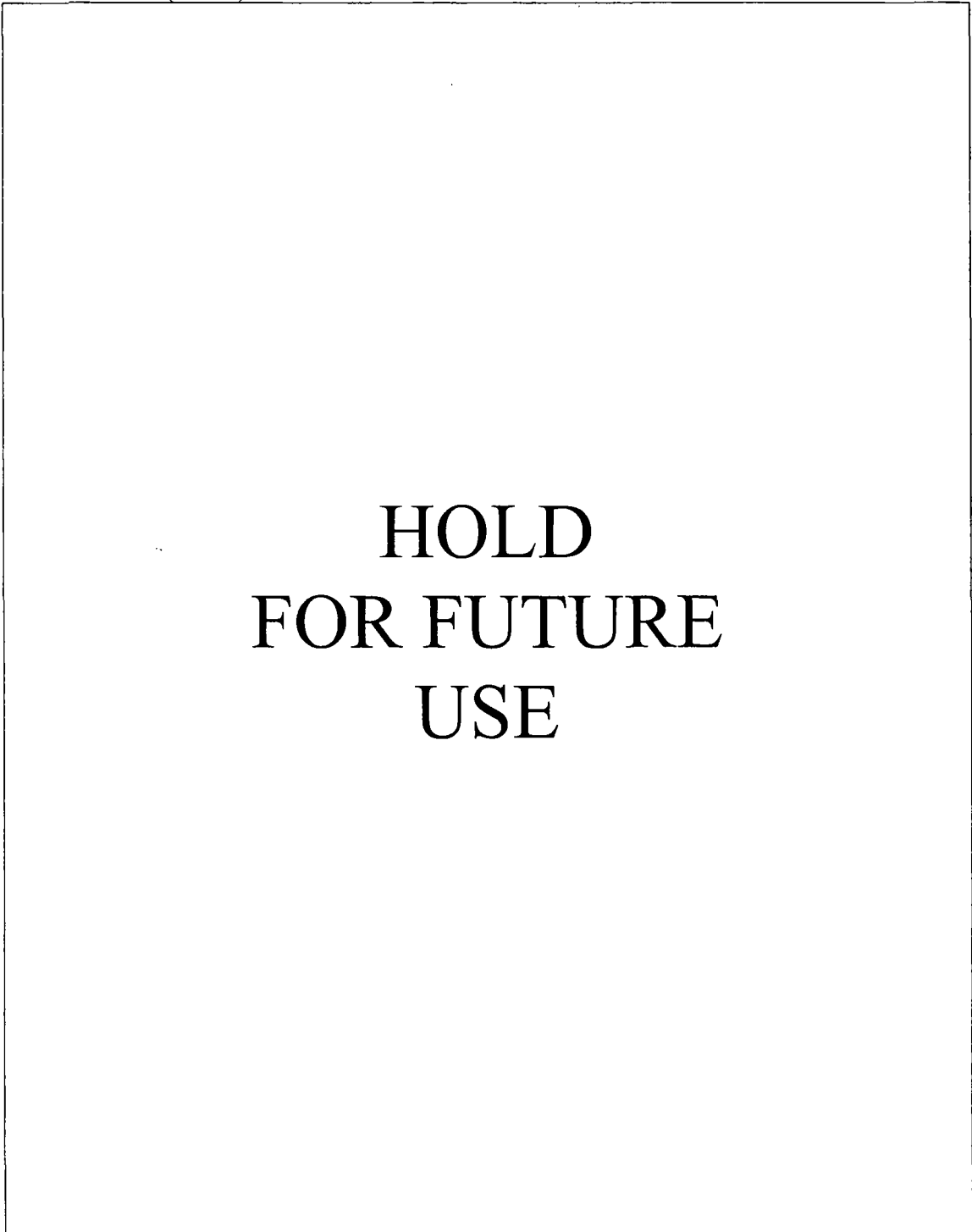
Issued by:
Sean Twomey, President
Great Basin Water Co.



Great Basin Water Co.
1240 E. State St., Ste. 115
Pahrump, NV 89048

FIRST REVISED PUCN Sheet No. 247
Cancels
ORIGINAL PUCN Sheet No. 247

Tariff No. 1-W (Water)

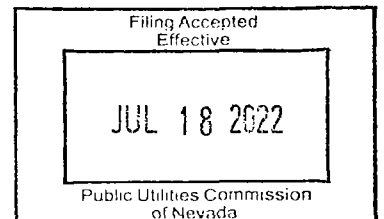


D

D

Issued:
Effective:
Advice No.:

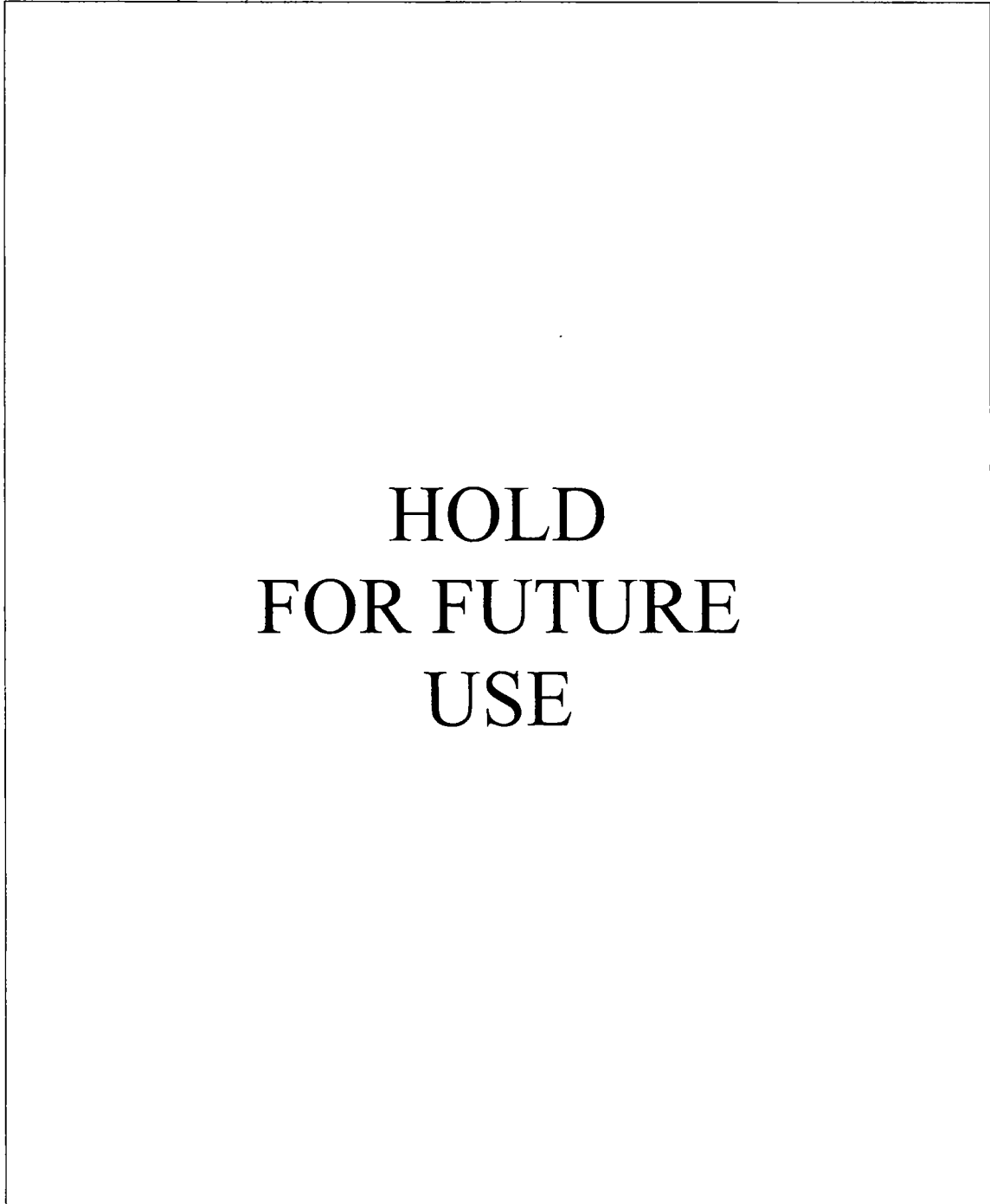
Issued by:
Sean Twomey, President
Great Basin Water Co.



Great Basin Water Co.
1240 E. State St., Ste. 115
Pahrump, NV 89048

THIRD REVISED PUCN Sheet No. 248
Cancels
SECOND REVISED PUCN Sheet No. 248

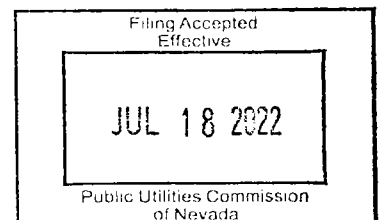
Tariff No. 1-W (Water)



D
—
D
L
L
L
L
D
—
D

Issued:
Effective:
Advice No.:

Issued by:
Sean Twomey, President
Great Basin Water Co.



Tariff No. 1-W (Water)

SCHEDULE WSCONN-1
SERVICE CONNECTION CHARGES – COLD SPRINGS

D/L

A. NEW SERVICE INSTALLATION

1. Applicant shall be responsible for the costs for the following, which shall be performed by a contractor deemed to be qualified by the Utility in writing prior to the commencement of work.
 - a. Furnish and install, the service pipes and meter box together with accessories, if such does not exist.
 - b. Furnish, install and maintain the yard piping required for service.
 - c. Provide and install all trench, backfilling, backfill materials and repaving.

B. METER INSTALLATION FEE

The Utility shall collect a meter installation fee which includes the cost of the meter, meter box and other accessories required by the Utility for the service connection and the Actual Cost of the meter (including shipping and tax) plus \$100.00.

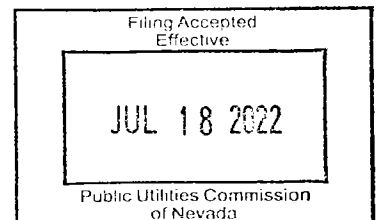
C. BACKFLOW PREVENTION DEVICE INSTALLATION FEE

The Utility shall collect a backflow prevention device installation fee from the Customer when Utility installs a backflow prevention device. The backflow prevention device installation fee shall be equal to the Utility's actual cost of installing a backflow prevention device.

D/L

Issued:
Effective:
Advice No.:

Issued by:
Sean Twomey, President
Great Basin Water Co.



Great Basin Water Co.
1240 E. State St., Ste. 115
Pahrump, NV 89048

SECOND REVISED PUCN Sheet No. 249A
Cancels
FIRST REVISED PUCN Sheet No. 249A

Tariff No. 1-W (Water)

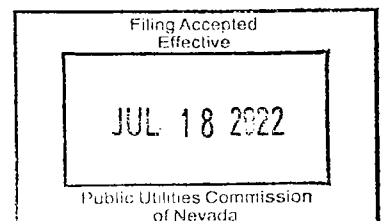
HOLD
FOR FUTURE
USE

L

L

Issued:
Effective:
Advice No.:

Issued by:
Sean Twomey, President
Great Basin Water Co.



Tariff No. 1-W (Water)

SCHEDULE WSCONN-2
SERVICE CONNECTIONS CHARGES - PAHRUMP

SERVICE CONNECTION CHARGE

The charges to be made and collected by the Utility for new or modified service connections pursuant to Rule No. 15 shall be as set forth Table 1, below. The service connections charges do not include, and are imposed in addition to Water Main and Fire Hydrant Charges.

Table 1
GENERAL SERVICE

Service Connection Size	Connection Charge
Smaller than or equal to 1"	\$2,510.00
1 1/2" or 2"	\$3,200.00
Larger than 2"	Actual Cost Plus \$47.00

The Utility will furnish and install, and thereafter maintain, all equipment and materials for service and meter installations; ownership and title to all such equipment and materials shall remain in the Utility.

Any Customer for which a service connection is installed at a depth of five (5) feet or deeper must pay actual costs incurred by Utility in connection with meeting local, State or Federal shoring requirements.

Any Customer for which a service connection is installed greater than one hundred (100) linear feet must pay actual costs incurred by Utility in connection with meeting local, State or Federal shoring requirements.

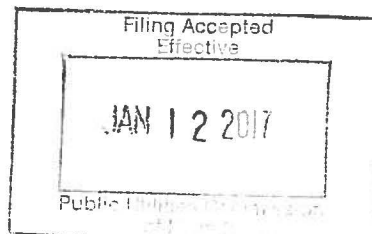
FIRE HYDRANT CHARGES

Single Check Valve Installation at cost
Double Check Valve Installation at cost

The Utility shall determine when a double check valve installation is necessary.

Issued:
Effective:
Advice No.:

Issued by:
Wendy Barnett, President
Great Basin Water Co.



Great Basin Water Co.
1240 E. State St., Ste. 115
Pahrump, NV 89048

ORIGINAL PUCN Sheet No. 251
Cancels
PUCN Sheet No. __

Tariff No. 1-W (Water)

SCHEDULE WSCONN-2
SERVICE CONNECTIONS CHARGES – PAHRUMP (Continued)

METER INSTALLATION FEE

The Utility shall collect a meter installation fee (includes cost of meter) when a Customer or a developer installs a meter box and requests that the Utility install a meter. The table below sets forth the applicable meter installation fees.

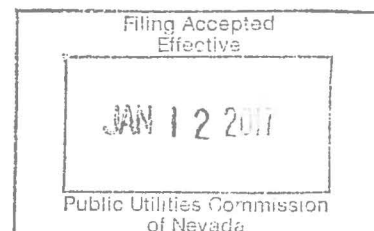
Service Connection Size	Connection Charge
Smaller than or equal to 1"	\$218
1 1/2" and 2"	\$446
Larger than 2"	Actual cost plus \$47.00

BACKFLOW PREVENTION DEVICE INSTALLATION FEE

The Utility shall collect a backflow prevention device installation fee from the Customer when Utility installs a backflow prevention device. The backflow prevention device installation fee shall be equal to the Utility's actual cost of installing a backflow prevention device.

Issued:
Effective:
Advice No.:

Issued by:
Wendy Barnett, President
Great Basin Water Co.



Tariff No. 1-W (Water)

SCHEDULE WSTOR-1
WATER STORAGE CAPACITY CHARGE - PAHRUMP

A. APPLICABILITY

A water storage capacity charge of ninety cents (\$0.90) per gallon will be charged to customers for new or expanded water service. This is a one time charge on the property unless service is expanded.

B. WILL SERVE COMMITMENTS

A will serve commitment is hereby made a condition precedent to receiving new or expanded water service from the Utility. Applicants for service must provide Utility with sufficient plans to establish the water needs of the proposed development.

C. CALCULATION OF WATER STORAGE CAPACITY REQUIREMENTS

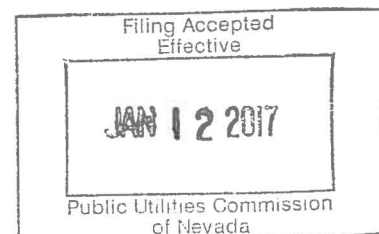
The water storage capacity required will be computed as follows:

SERVICE CLASSIFICATION	AVERAGE DAILY DEMAND
Residential	a. 1,000 gallons per day, or the current Rule No. 21
Commercial, Industrial & others	(1) Estimated water demand as furnished by the customer and verified by the Utility, and other governing agency, or (2) Current addition of the Uniform Plumbing Code, or (3) Existing water rights which have been transferred to the Utility

In cases where the Applicant's actual historic average daily water demand exceeds estimated usage, for the months of December, January, February, and March, an Applicant must provide the additional water tank storage capacity. This provision does not apply to residential use except where types of use changes.

Issued:
Effective:
Advice No.:

Issued by:
Wendy Barnett, President
Great Basin Water Co.



Tariff No. 1-W (Water)

SCHEDULE WSUPP-1
WATER SUPPLY CHARGE - PAHRUMP

A. APPLICABILITY

A water supply charge of sixty-five cents (\$0.65) per gallon will be charged to Customers for new or expanded service. This is a one time charge on the property unless service is expanded.

B. CALCULATION OF WATER SUPPLY REQUIREMENTS

The water supply requirement will be calculated as follows:

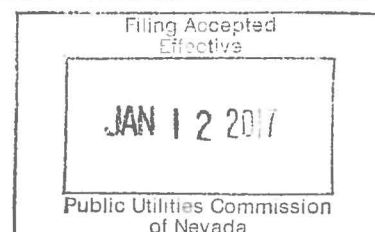
SERVICE CLASSIFICATION	AVERAGE DAILY DEMAND
Residential	a. 1,000 gallons per day, or the dedication required by Rule No. 21 of this tariff
Commercial	1) Estimated water demand as furnished by the Customer and verified by the Utility, and other governing agency; or 2) Current addition of Uniform Plumbing Code 3) Existing water rights which have been transferred to the Utility.

The Utility may, in its reasonable discretion, determine the cost of the minimum storage facilities either (a) by using reasonable engineering judgment, taking into consideration the Utility's approved Master Plan and the actual cost of similar facilities, as appropriate, or (b) calculating such in the same manner as the Water Storage Capacity Charge under and Schedules WSTOR-1 (Pahrump) and WSTOR-2 (Spring Creek).

An Applicant who pays for the cost of storage facilities under Rule No. 9 (D) (2) (b) shall not pay the Water Storage Capacity Charge under and Schedules WSTOR-1 (Pahrump) and WSTOR-2 (Spring Creek).

Issued:
Effective:
Advice No.:

Issued by:
Wendy Barnett, President
Great Basin Water Co.



Tariff No. 1-W (Water)

SCHEDULE WSCONN-4
SERVICE CONNECTION CHARGES – SPANISH SPRINGS

A. NEW SERVICE INSTALLATION

1. Applicant shall be responsible for the costs for the following, which shall be performed by a contractor deemed to be qualified by the Utility in writing prior to the commencement of work.
 - a. Furnish and install, the service pipes and meter box together with accessories, if such does not exist.
 - b. Furnish, install and maintain the yard piping required for service.
 - c. Provide and install all trench, backfilling, backfill materials and repaving.

B. METER INSTALLATION FEE

The Utility shall collect a meter installation fee which includes the cost of the meter, meter box and other accessories required by the Utility for the service connection and the Actual cost of the meter (including shipping and tax) plus \$100.00.

C. BACKFLOW PREVENTION DEVICE INSTALLATION FEE

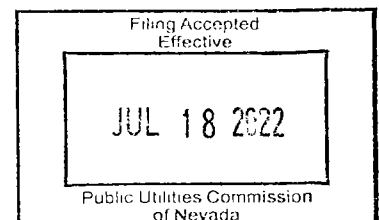
The Utility shall collect a backflow prevention device installation fee from the Customer when Utility installs a backflow prevention device. The backflow prevention device installation fee shall be equal to the Utility's actual cost of installing a backflow prevention device.

D/L

D/L

Issued:
Effective:
Advice No.:

Issued by:
Sean Twomey, President
Great Basin Water Co.



Great Basin Water Co.
1240 E. State St., Ste. 115
Pahrump, NV 89048

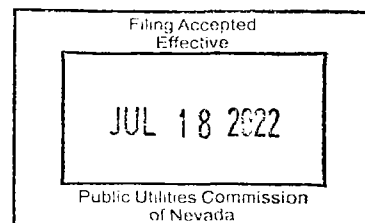
FIRST REVISED PUCN Sheet No. 254A
Cancels
ORIGINAL PUCN Sheet No. 254A

Tariff No. 1-W (Water)

HOLD
FOR FUTURE
USE

Issued:
Effective:
Advice No.:

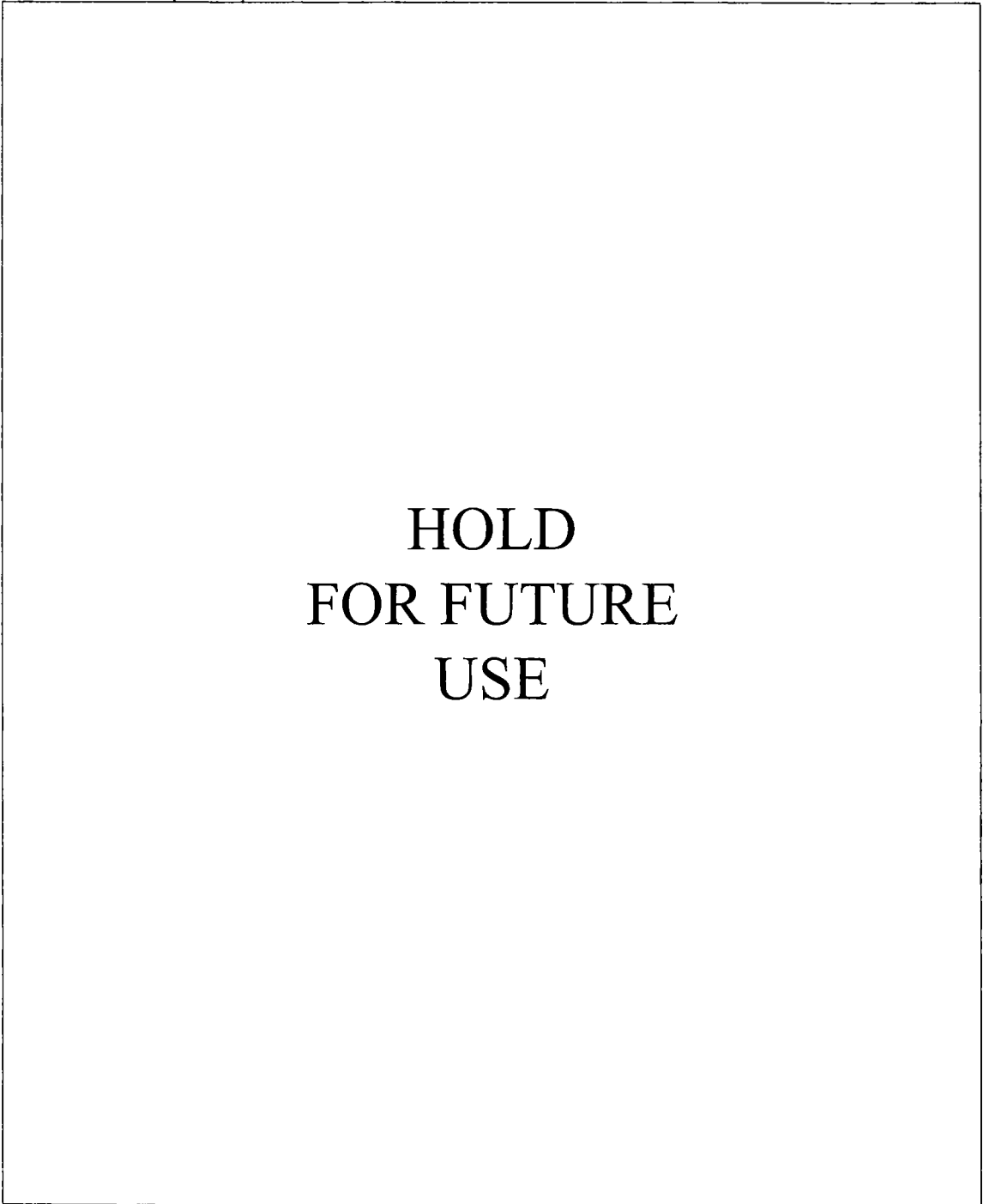
Issued by:
Sean Twomey, President
Great Basin Water Co.



Great Basin Water Co.
1240 E. State St., Ste. 115
Pahrump, NV 89048

FOURTH REVISED PUCN Sheet No. 255
Cancels
THIRD REVISED PUCN Sheet No. 255

Tariff No. 1-W (Water)

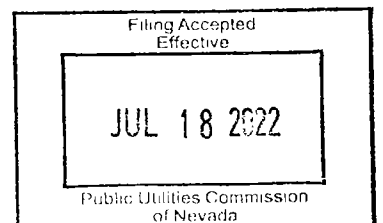


D

D

Issued:
Effective:
Advice No.:

Issued by:
Sean Twomey, President
Great Basin Water Co.



Tariff No. 1-W (Water)

SCHEDULE WSCONN-3
SERVICE CONNECTION CHARGES – SPRING CREEK

A. SERVICE CONNECTION CHARGE

The charges for new or modified connections pursuant to Rule No. 15 shall be set forth in Table 1 below.

TABLE 1 – SERVICE CONNECTION CHARGES

DESCRIPTION	SERVICE CONNECTION CHARGE
For 3/4" service with non-road crossing	\$1,515.00
For 3/4" service with road crossing	\$2,860.00
For 1" service with non-road crossing	\$1,691.00
For 1" service with road crossing	\$2,907.00
Larger than 1"	Actual cost plus \$50.30

1. Any Customer for which a service connection is installed at a depth of 5 feet or deeper must pay actual costs incurred by the Utility in connection with meeting local, State and Federal shoring requirements, plus \$50.30.
2. Any Customer for which a service connection is installed greater than 100 linear feet must pay actual costs incurred by Utility in connection with meeting local, State and Federal requirements, plus \$50.30.

B. METER INSTALLATION FEE

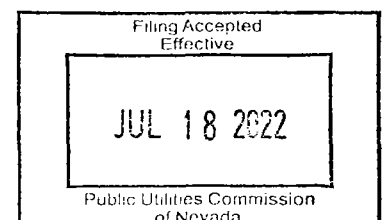
The Utility shall collect a meter installation fee which includes the cost of the meter when a Customer or a developer installs a meter box and the Utility installs a meter. Table 2, below, sets forth the applicable meter installation fees.

TABLE 2 – METER INSTALLATION

METER SIZE	BASE RATE
3/4"	\$93.75
1"	\$137.62
Larger than 1"	Actual cost plus \$41.30

Issued:
 Effective:
 Advice No.:

Issued by:
 Sean Twomey, President
 Great Basin Water Co.



Great Basin Water Co.
1240 E. State St., Ste. 115
Pahrump, NV 89048

ORIGINAL PUCN Sheet No. 257
Cancels
PUCN Sheet No. ___

Tariff No. 1-W (Water) Applicable: SC

SCHEDULE WSTOR-2
WATER STORAGE CAPACITY CHARGE – SPRING CREEK

A. APPLICABILITY

A Water Storage Capacity charge of \$0.98 per gallon will be charged to customers for new or expanded water service. This is a one-time charge on the property unless service is expanded.

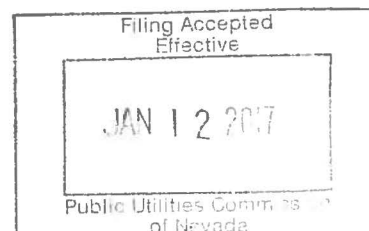
B. CALCULATION

The water storage capacity required will be computed as follows:

SERVICE CLASSIFICATION	AVERAGE DAILY DEMAND
Residential Single Family	1,000 per day or current Rule No. 21
Residential Duplex	500 gallons per day or current Rule No. 21
Other Residential	250 gallons per day or current Rule No. 21
Commercial	1) Estimated average daily water demand provided by Applicant and verified by Utility. An Engineer may be required to provide estimate with wet stamp, or 2) Current Addition of the Uniform Plumbing Code Fixture Calculation

Issued:
Effective:
Advice No.:

Issued by:
Wendy Barnett, President
Great Basin Water Co.



Tariff No. 1-W (Water)

SCHEDULE WSUPP-2
WATER SUPPLY CHARGE – SPRING CREEK

A. APPLICABILITY

A Water Supply Charge of \$0.65 per gallon will be charged to customers for new or expanded water service. This is a one-time charge on the property unless service is expanded.

B. CALCULATION

The water supply required will be computed as follows:

SERVICE CLASSIFICATION	AVERAGE DAILY DEMAND
Residential Single Family	1,000 gallons per day or current Rule No. 21
Residential Duplex	500 gallons per day or current Rule No. 21
Other Residential	250 gallons per day or current Rule No. 21
Commercial	1) Estimated average daily water demand provided by Applicant and verified by Utility. An Engineer may be required to provide estimate with wet stamp, or 2) Fixture Count Calculation in current Rule No. 21

Issued:
Effective:
Advice No.:

Issued by:
Wendy Barnett, President
Great Basin Water Co.

